

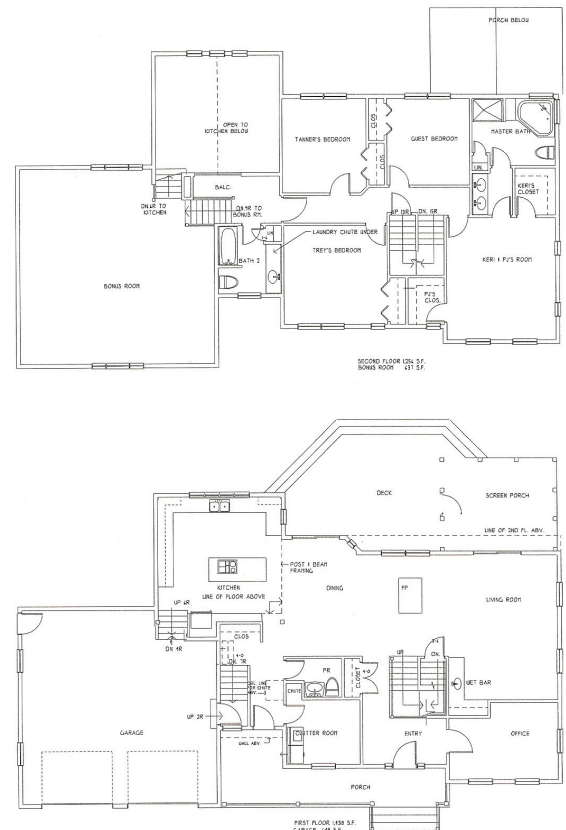


**Lombardi-Poquette Residence- Quarry Road, St. Albans, VT**

Located on a several acre site at the base of Telegraph Hill, the residence overlooks the City and Lake Champlain. Its four bedroom design provides for a young couple with two growing and active boys. All bedrooms are located on the second floor yet the Master Bedroom suite obtains its privacy by use of the guest bedroom and main scissor stair as separating elements from the boys' bedrooms.

The main level consists of a post & beam decorated kitchen open to the living-dining Great Room that connects to a large exterior deck and screen porch. Off the main entrance is an at-home office to supplement the couple's in-city office of the Paul Poquette Realty Group. The secondary entrance leads directly to a laundry and the adjacent lavatory. The secondary entrance hall also leads to the oversized two car garage and one of two entrances to a full basement "Clutter Room". A game and media room occupies the space above the garage that places it at a mid level between the main and bedroom floors. It is directly accessible from the kitchen and bedroom areas.

The front of the property is at the end of a four home cul-de-sac common drive while the rear opens to the rock rise of the former quarry at the base of telegraph Hill.



Floor plans are to the right